



OG-SDI-EM 12G

User Manual

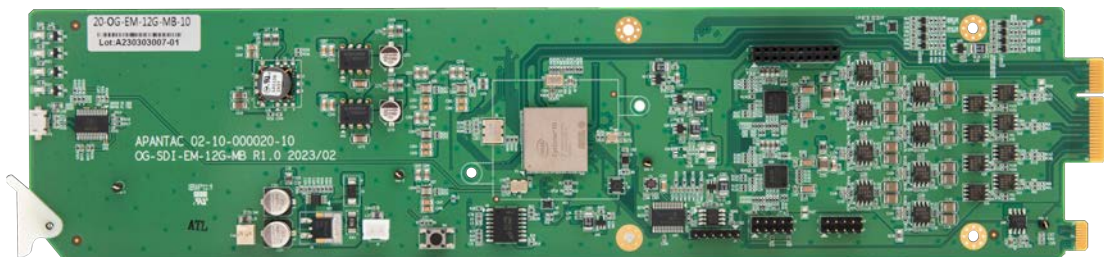


Table of Contents

1.0	WHAT'S IN THE BOX	2
2.0	Key Features	2
3.0	Specifications	2
4.0	Rear Modules	3
5.0	Dashboard Control	3
5.1	Getting Started	3
5.2	Running Dashboard	3
5.3	OG-SDI-EM-12G Dashboard GUI	4
5.3.1	Signal Status	4
5.3.2	Built-in Test Pattern	6
	Appendix A	7
	WARRANTY STATEMENT	7

1.0 WHAT'S IN THE BOX

OG-SDI-EM-12G-SET-1

- 1 x OG-SDI-EM-12G-MB
- 1 x OG-SDI-EM-12G-AA8-RM

OG-SDI-EM-12g-SET-2

- 1 x OG-SDI-EM-12G-MB
- 1 x OG-SDI-EM-12G-AES8-RM

2.0 Key Features

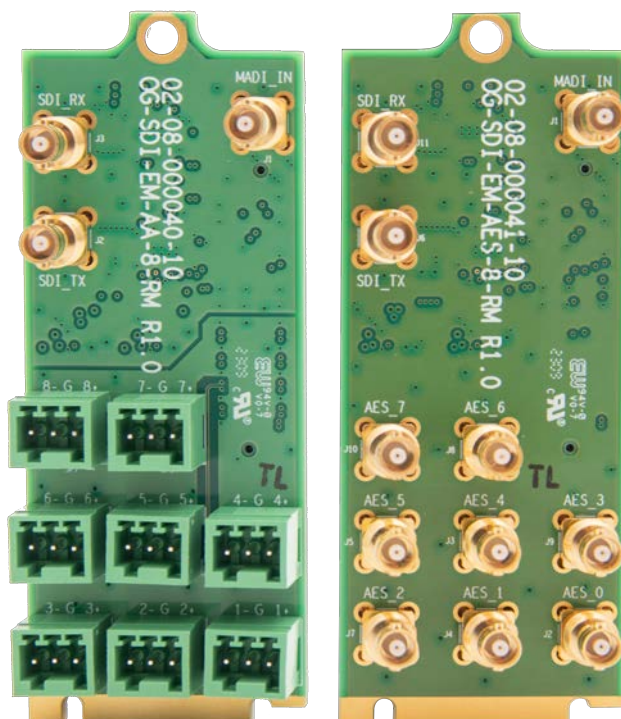
- OGX/3.0 card-based form factor.
- Dashboard control enabled.
- Supports up to 12G SDI video input and output.
- Embeds up to 8 channels of balanced analog audio inputs.
- Embeds up to 16 channels of balanced/unbalanced AES inputs
- Built-in pattern generator (color bars)
- Low power consumption - less than 10 W.
- 5-year limited warranty

3.0 Specifications

Description	12G SDI audio embedder
Product Name	OG-SDI-EM-12G-SET-1
Video Input	1 x SDI
Audio Input	8 x balanced analog audio
Video Output	SDI with embedded audio

Description	12G SDI audio embedder
Product Name	OG-SDI-EM-12G-SET-2
Video Input	1 x SDI
Audio Input	8 x unbalanced AES audio
Video Output	SDI with embedded audio

4.0 Rear Modules



5.0 Dashboard Control

5.1 Getting Started

The Dashboard software is design to allow you to quickly access the feature sets of openGear form factor cards on a simple User Interface. This section will help you get up and running as quickly as possible.

5.2 Running Dashboard

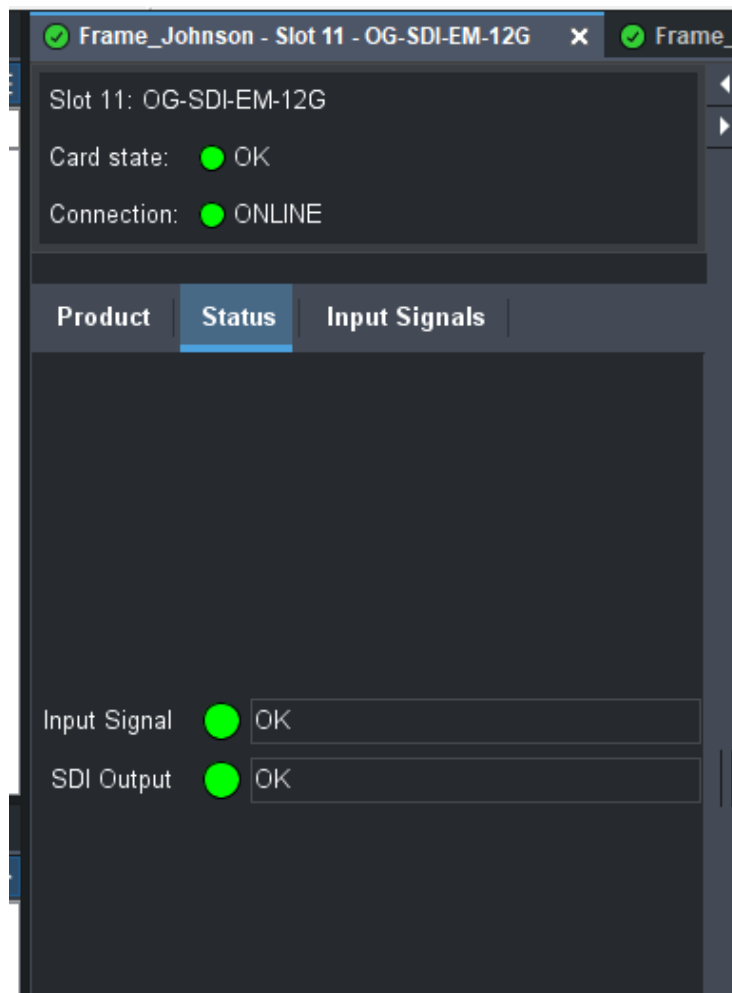
Before you can successfully run the Dashboard software for the first time you must first download it from <https://www.opengear.tv/frame-and-control/control-system/download/>. Run the downloaded setup file and choose an appropriate installation location on your computer's storage.

Now you can run the Dashboard by double clicking on the Dashboard icon.

5.3 OG-SDI-EM-12G Dashboard GUI

OG-SDI-EM-12G is a very straight forward plug and play card.
The Dashboard interfaces are as follows,

5.3.1 Signal Status

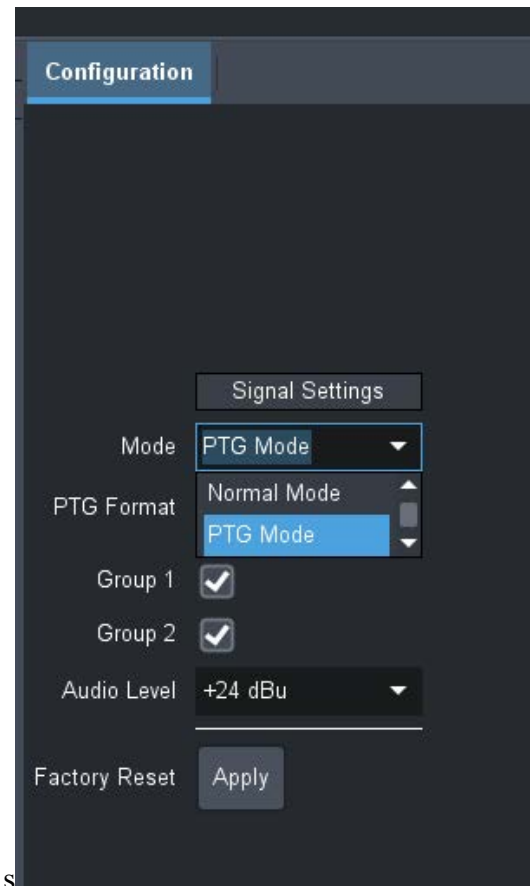


Slot 11: OG-SDI-EM-12G
Card state: ● Input Signal No Input
Connection: ● ONLINE

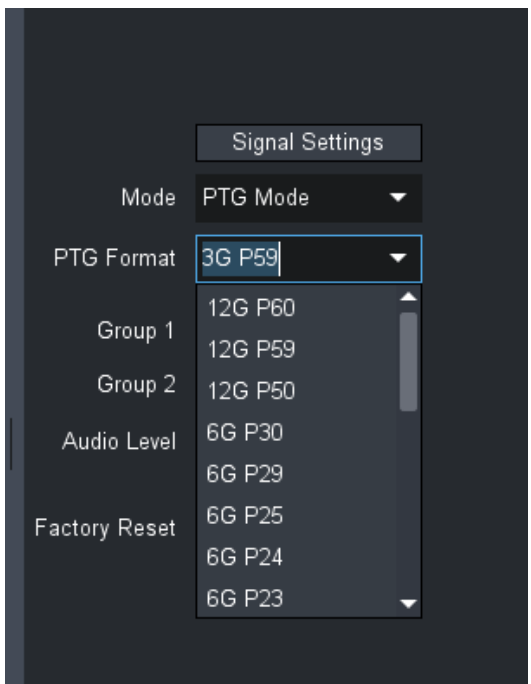
Product | **Status** | **Input Signals**

SDI Info	
Status	-----
Standard	-----
Data Rate	-----
Bit Depth	-----
Sampling	-----
HDR Metadata	-----
Colorimetry	-----
Level	-----
Mapping	-----

5.3.2 Built-in Test Pattern



Enable Test Pattern



Select Format



Select Audio Properties

Appendix A

COPYRIGHT, TRADEMARK, and REGISTRATION

All rights reserved by APANTAC LCC, Beaverton, Oregon, USA. No part of this document may be reproduced in any form or by any means without written permission from the product manufacturer. Changes are periodically made to the information in this document. They will be incorporated in subsequent editions. The product manufacturer may make improvements and/or changes in the product described in this document at any time.

All other trademark(s), copyright(s), and registered technologies mentioned in this document are the properties of their respective owner(s).

WARRANTY STATEMENT

Apantac LLC (herein after referred to as "Apantac") warrants to the original purchaser of the products manufactured by Apantac (the "Product,") will be free from defects in material and workmanship for a period of three (3) year from the date of shipment of the Product to the purchaser.

If the Product proves to be defective during the three (3) year warranty period, the purchaser's exclusive remedy and Apantac's sole obligation under this warranty is expressly limited, at Apantac's sole option, to:

- (a) repair the defective Product without charge for parts and labor or,
- (b) provide a replacement in exchange for the defective Product or,
- (c) if after a reasonable time, is unable to correct the defect or provide a replacement Product in good working order, then the purchaser shall be entitled to recover damages subject to the limitation of liability set forth below.

Limitation of Liability

Apantac's liability under this warranty shall not exceed the purchase price paid for the defective product. In no event shall Apantac be liable for any incidental, special or consequential damages, including without limitation, loss of profits for any breach of this warranty.

If Apantac replaces the defective Product with a replacement Product as provided under the terms of this Warranty, in no event will the term of the warranty on the replacement Product exceed the number of months remaining on the warranty covering the defective Product.

Equipment manufactured by other suppliers and supplied by Apantac carries the respective manufacturer's warranty. Apantac assumes no warranty responsibility either expressed or implied for equipment manufactured by others and supplied by Apantac.

This hardware warranty shall not apply to any defect, failure, or damage:

- a) Caused by improper use of the Product or inadequate maintenance and care of the Product.
- b) Resulting from attempts by those other than Apantac representatives to install, repair, or service the Product.
- c) Caused by installation of the Product in a hostile operating environment or connection of the Product to incompatible equipment.